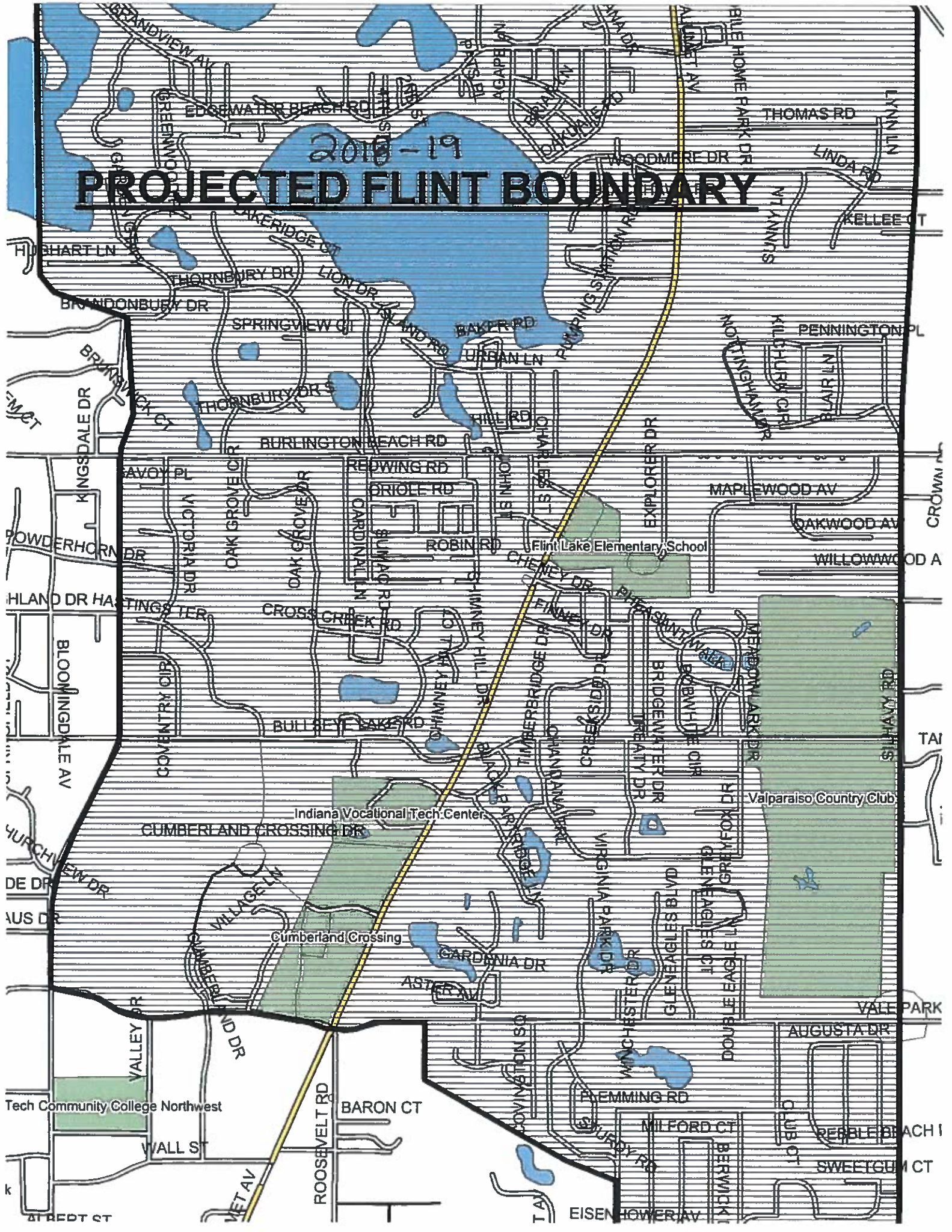


2018-19

# PROJECTED FLINT BOUNDARY



# **FLINT LAKE ELEMENTARY BOUNDARY**

**2018-2019**

## **North Boundary**

South side of 600N to an imaginary line extended north from Silhavy Road on the east side to an imaginary line that runs north to south on the west side of Grandview Avenue.

## **South Boundary**

North side of Glendale Blvd. from Silhavy Road to the east side Sturdy Road. Proceed north on the east side of Sturdy Road to an imaginary diagonal line just south of Allison Circle proceeding north and west to the intersection of Calumet Avenue and Vale Park Road. East side of Sturdy Road will attend Flint Lake Elementary. Proceed west on Vale Park Road from Calumet Avenue to Valparaiso Street with the north side of Vale Park Road attending Flint Lake Elementary.

## **East Boundary**

Silhavy Road (200E) from Glendale Blvd. to 600N with an imaginary line extended north from Silhavy Road to 600N.

## **West Boundary**

East side of Sturdy Road from Glendale Boulevard to the imaginary diagonal line just south of Allison Circle. North on Valparaiso Street from Vale Park Road to Burlington Beach Road with the east side of Valparaiso Street attending Flint Lake Elementary. Proceed north from Burlington Beach Road with an imaginary line extended north to the corner of Kingsdale Drive and Andover Drive. Both sides of Kingsdale Drive will attend Cooks Corner Elementary. Proceed north and west with an imaginary line that runs between Spectacle Drive and Hughart Lane and proceeds north to 600N just west of Grandview Avenue.